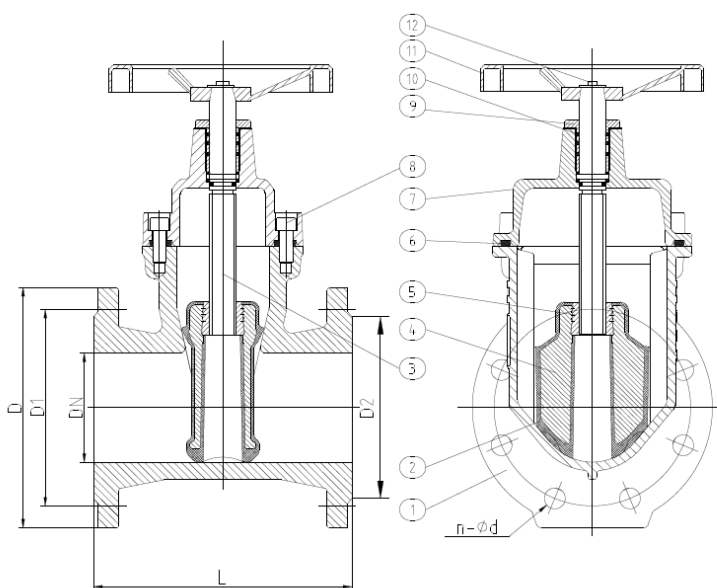


Technical Specification of Gate Valve



- Type : Non-Rising Stem with Changeable O-Ring
- Sizes : 50 mm to 200 mm
- Medium : Water
- Nominal Pressure : 1.6 bar
- Test Pressure : Shell – 2.4 bar Sealing – 1.76 bar
- End Connections : Flanged as per IS-1538 R/F Drilled
- Face to face dimension : BS5163

Rubber Encapsulated Wedges; Low torque operations as per BS 5163



ITEM	PART NAME	MATERIAL
1	Body	Ductile Iron
2	Seat	EPDM
3	Shaft	SS420
4	Disc	Ductile Iron
5	Wedge Nut	Brass
6	Bonnet Gasket	EPDM
7	Bonnet	Ductile Iron
8	Bolt	SS
9	Nut	Brass
10	Oring	Silicon
11	Hand Wheel	Ductile Iron
12	Stem Nut	SS

*All parts are nontoxic suitable for drinking water.